



East Loop Streetscape Improvements

December 2025

LJC¹

LOCHMUELLER
GROUP

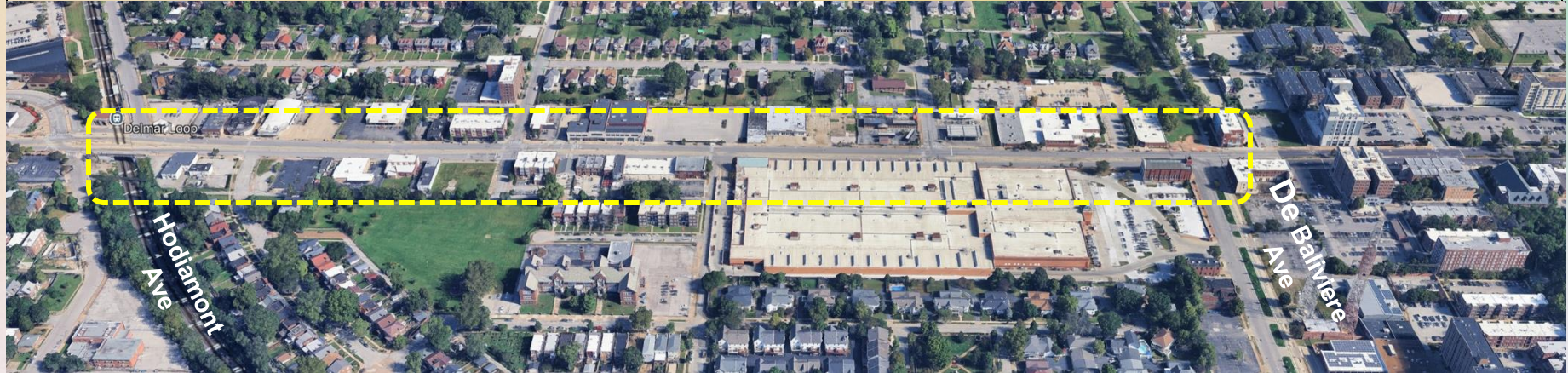
Project Location & Boundaries


Project Area

The project focuses on the 5800 to 5900 blocks of Delmar Boulevard, extending from Hodiamont Avenue on the west to DeBalivere Avenue on the east, including improvements on both sides of the street.

Key Connections

The project area links directly to Lucier Park, the MetroLink transit system, the Loop Trolley, and Ruth Porter Mall enhancing accessibility and connectivity for residents and visitors.





Importance

Why This Project Matters

Improve Safety, Accessibility, Appearance

Upgrading crosswalks, lighting, and sidewalks to ensure safer, accessible routes for pedestrians and people with disabilities while enhancing the overall street aesthetics.

Strengthen Connections

Better links to nearby parks, local businesses, MetroLink transit, and the Loop Trolley create easy access and promote active transportation options.

Support Local Culture & Economy

Design elements reflect the neighborhood's rich music heritage and arts scene, while supporting small businesses to boost economic vitality.

Create Welcoming, Vibrant Spaces

Adding greenery, shaded seating, and inviting public areas encourages community gathering and fosters a lively, inclusive environment for all.

Project Goals

Safer Pedestrian Crossings

Enhance visibility and safety at crosswalks with improved lighting and ADA-compliant ramps to ensure accessibility for all residents.

More Greenery and Shade

Add tree canopy, planters, and shaded seating areas to create a comfortable and inviting environment for pedestrians.

Calmer Traffic with Road Diets

Implement road diets to reduce vehicle speeds and improve safety, making the street more pedestrian and bike-friendly.

Better Transit Connections

Develop improved transit stops to encourage multi-modal transportation and connectivity.

Support for Small Business and Street Life

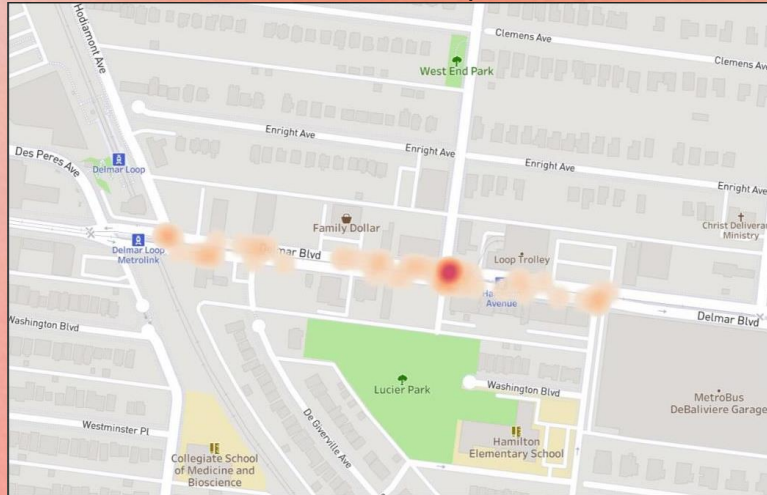
Enhance street vibrancy by supporting local shops, cafes, and cultural spaces that contribute to the community's unique character.

Work Completed



Traffic Study

Crash Heatmap



What does this mean/suggest?

We've noticed a high number of accidents along this section of Delmar particularly near Hamilton Ave. This points out the need for a road diet and bump-outs at the Hamilton intersection to calm traffic and improve pedestrian safety.

Crash Dashboard



What does this mean/suggest?

Parking, rear end, and passing accidents are most frequent along this stretch of Delmar especially near Hamilton. These types of accidents highlight the need for a narrower road and slower speeds. Bump-outs and a road diet can help us this.

Events — East Loop Open House August 18th



Events — Park(ing) Day September 19th



Events — Park(ing) Day September 19th



Additional Meetings / Events

- September 8th - Skinker — DeBaliviere Community Council Meeting
- September 15th - West End Neighbors Meeting
- September 16th - WeCollab Meeting @ Invest STL
- November 24th - Meeting with SDCC Community Development & Commercial District

What We've Heard So Far

Safety Improvements

Residents want more visible pedestrian crossings, enhanced street lighting, and traffic calming measures to improve overall safety.

Connectivity Enhancements

Feedback emphasized easier access to Lucier Park, MetroLink, bike routes, and the Loop Trolley to strengthen neighborhood connections.

Greening Efforts

Community members called for additional trees, planters, and shaded seating areas to create a greener, more comfortable streetscape.

Culture Reflection

Participants expressed desire to honor the neighborhood's music heritage and arts through culturally inspired design elements.

Business Support

Suggestions included creating inviting spaces that encourage people to stop, shop, and support local small businesses along Delmar Blvd.

How We Are Incorporating Feedback

Safety Considerations

Along with reviewing traffic safety improvements, we will be looking into CPTED (Crime Prevention Through Environmental Design) approaches to help inform future safety and security features.

Multi-modal Considerations

We will be evaluating appropriate bicycle support and infrastructure and how it can best coexist with pedestrian movement, including within wider sidewalk areas.

Testing the Design

We will test proposed design elements through semi-permanent, tactical installations to support continued community engagement and feedback.

Data Collection

Semi-permanent installations will be used to collect data on travel behavior, visitor volumes, parking conditions, and ongoing community feedback.

Attracting Development

We know better streets alone don't bring development. We will look at additional ways to support community-driven growth alongside streetscape improvements.

Streetscape Highlights

Widened Sidewalks

Sidewalks are expanded to provide more space for walking, socializing, and outdoor seating, enhancing pedestrian comfort and accessibility.

Better Bus Stops

Upgraded bus stops enhance transit convenience and shelter.

Tree Canopy for Shade

Newly planted trees create a continuous canopy that offers shade, improves air quality, and contributes to a pleasant street environment.

Safer Crossings

Enhanced crosswalks with clear markings, signals, and curb extensions increase pedestrian visibility and reduce crossing distances.

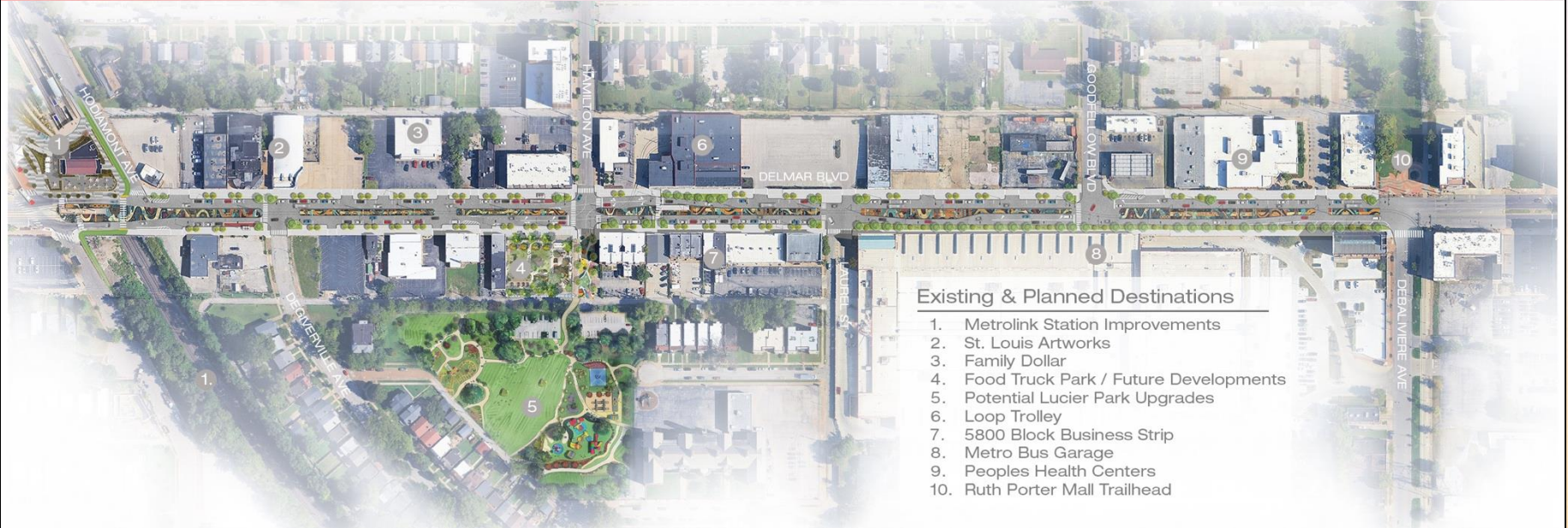
Pedestrian Lighting & Benches

Energy-efficient lighting improves safety and ambiance, while new benches offer comfortable spots for resting and community gathering.

Placemaking Design Features

Public art, music-themed elements, and historic references are integrated into streetscape features to celebrate local heritage and identity.

Overall Site Plan



Sidewalks are expanded to provide more space for walking, bicycling socializing, and outdoor seating, enhancing pedestrian comfort and accessibility.

Des Peres to Hamilton— Site Plan



1 10'-12' Shared Use Path

2 Curbed Planter

3 Parking Bump-Out

4 Improved Crosswalks

5 Pedestrian Lighting

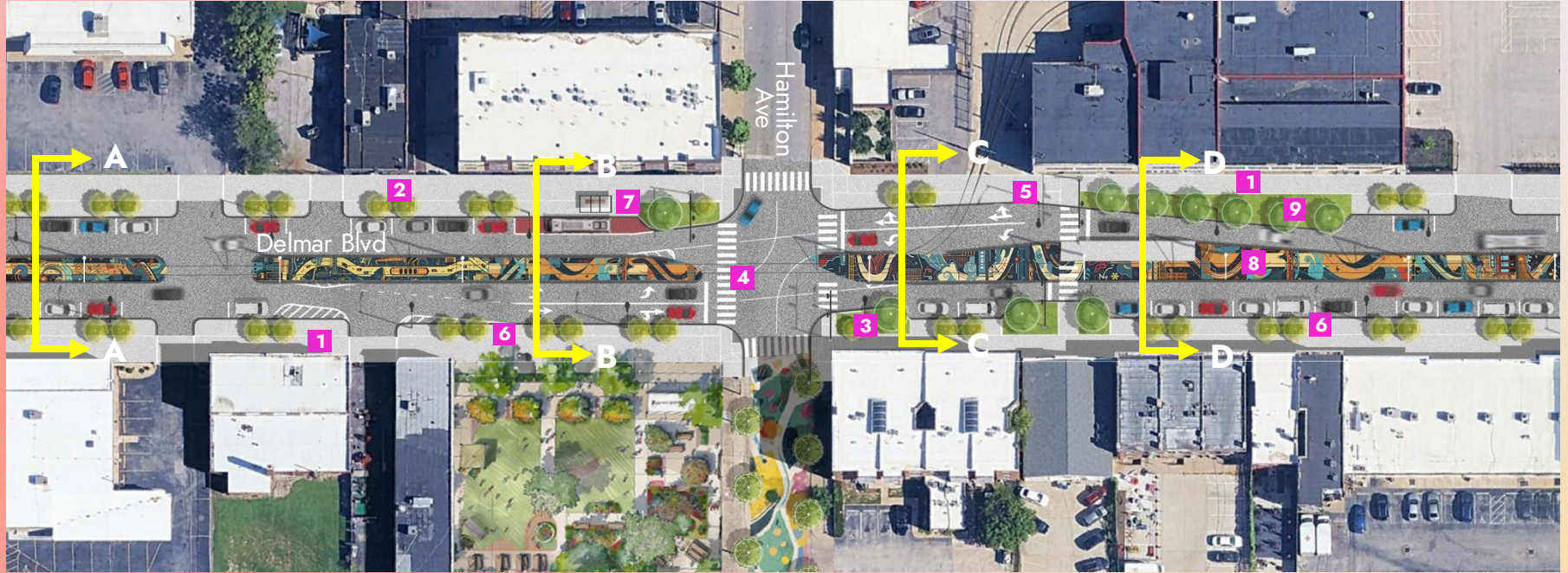
6 Carriage Walk

7 Improved Bus Stop

8 Trolley Mural

9 Tree Lawn Area

Laurel to Hamilton— Site Plan



1 10'-12' Shared Use Path

2 Curbed Planter

3 Parking Bump-Out

4 Improved Crosswalks

5 Pedestrian Lighting

6 Carriage Walk

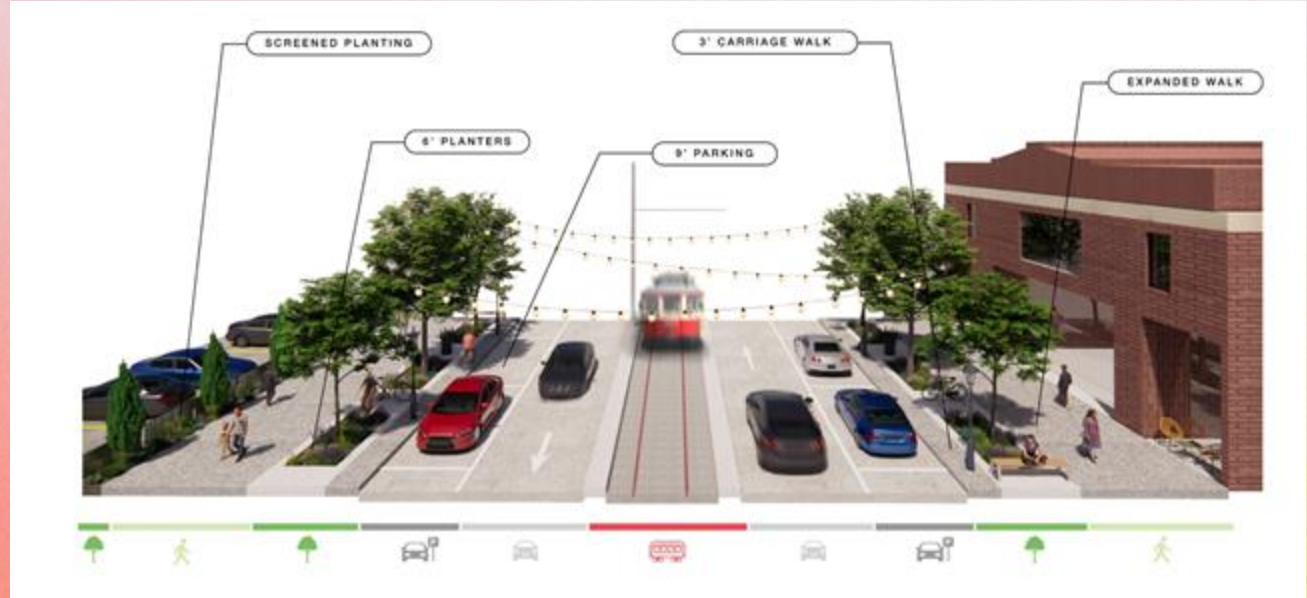
7 Improved Bus Stop

8 Trolley Mural

9 Tree Lawn Area

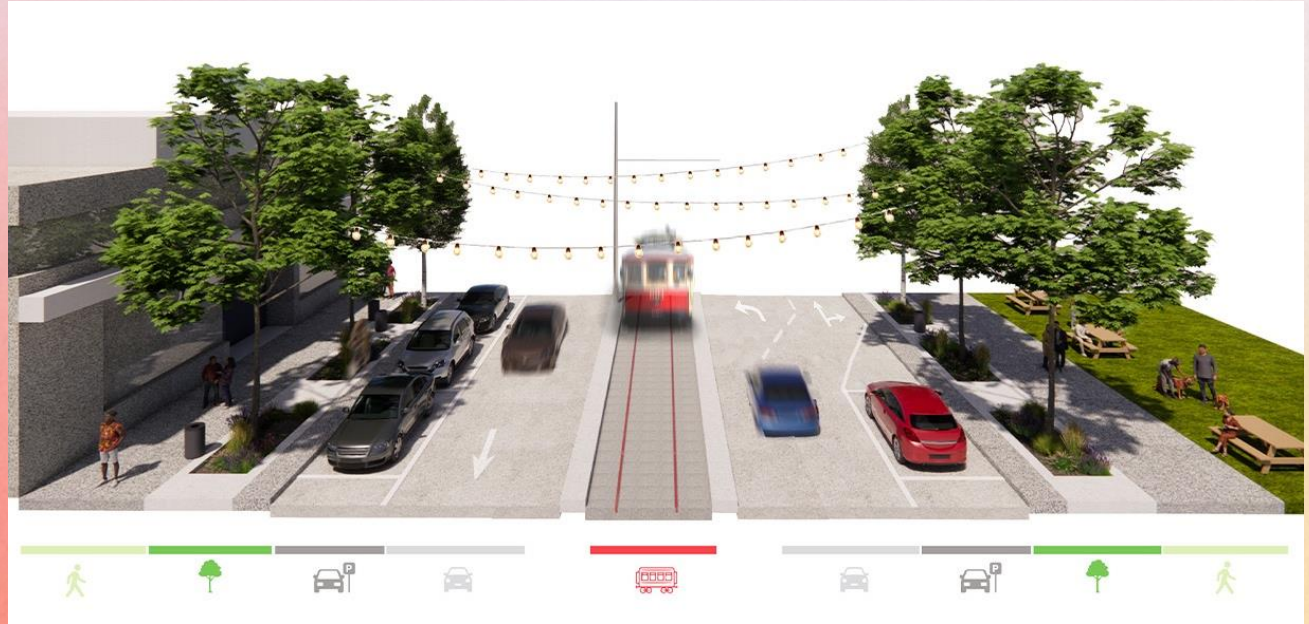
Section A-A

- Adds screened plantings to buffer surface parking from the sidewalk.
- Maintains parallel parking while improving pedestrian comfort.
- Expands walkway width to a shared-use path, introduces a 3' carriage walk for separation.
- Enhances the visual appeal of parking lot edges along Delmar.



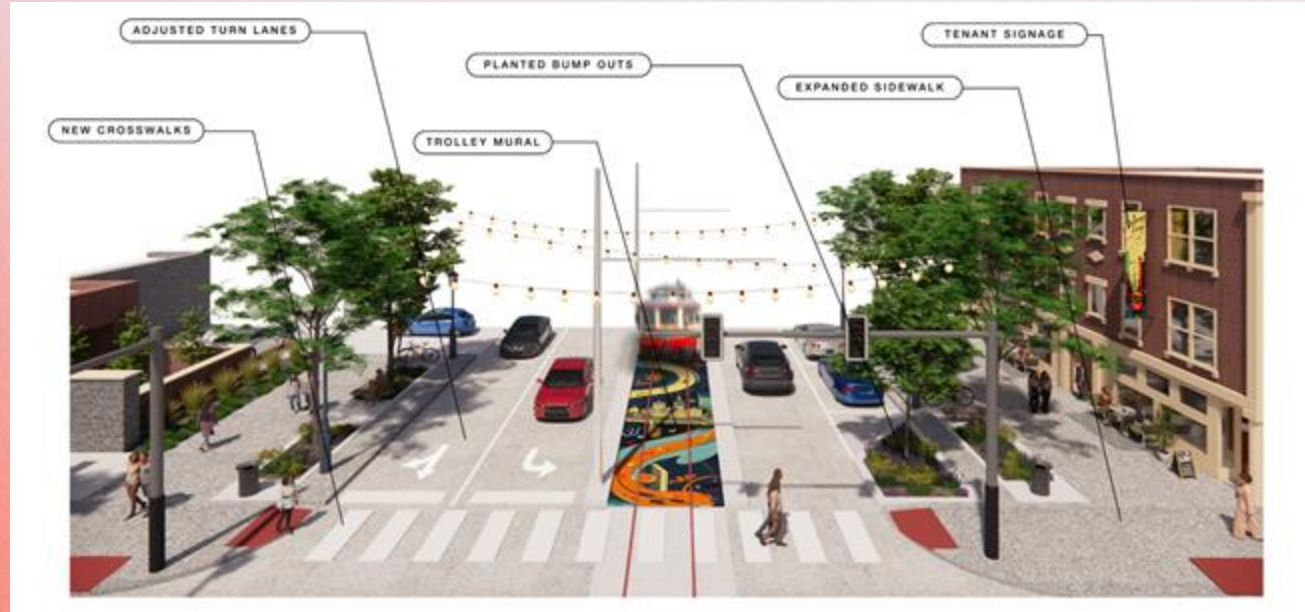
Section B-B

- Adjusted turn lanes to improve traffic flow and free up public space.
- Adds planted bump-outs to protect parked cars and shorten crossings.
- Creates a green connection to a future food truck park.
- Increases shade and pedestrian amenities with 6' planters and a wider shared-use path.



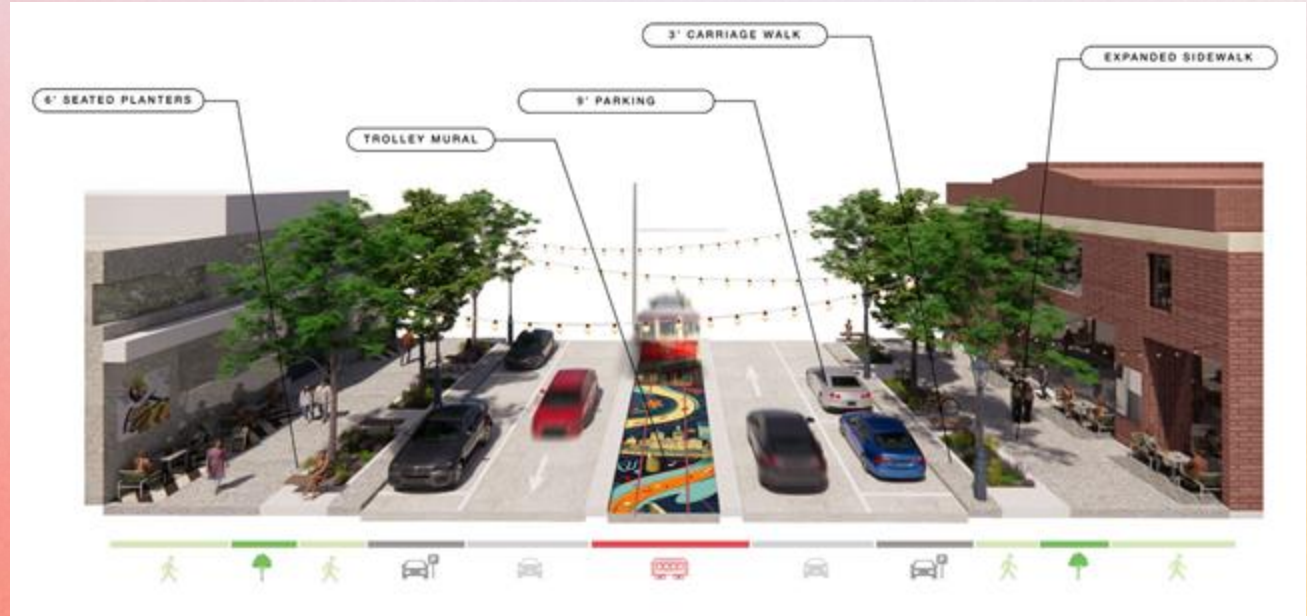
Section C-C

- Improves safety with new crosswalk alignments and adjusted turn lanes.
- Integrates public art with a trolley mural at the intersection.
- Adds planted bump-outs to protect parked cars and shorten crossings.
- Expands sidewalks and includes tenant signage for wayfinding and activation.



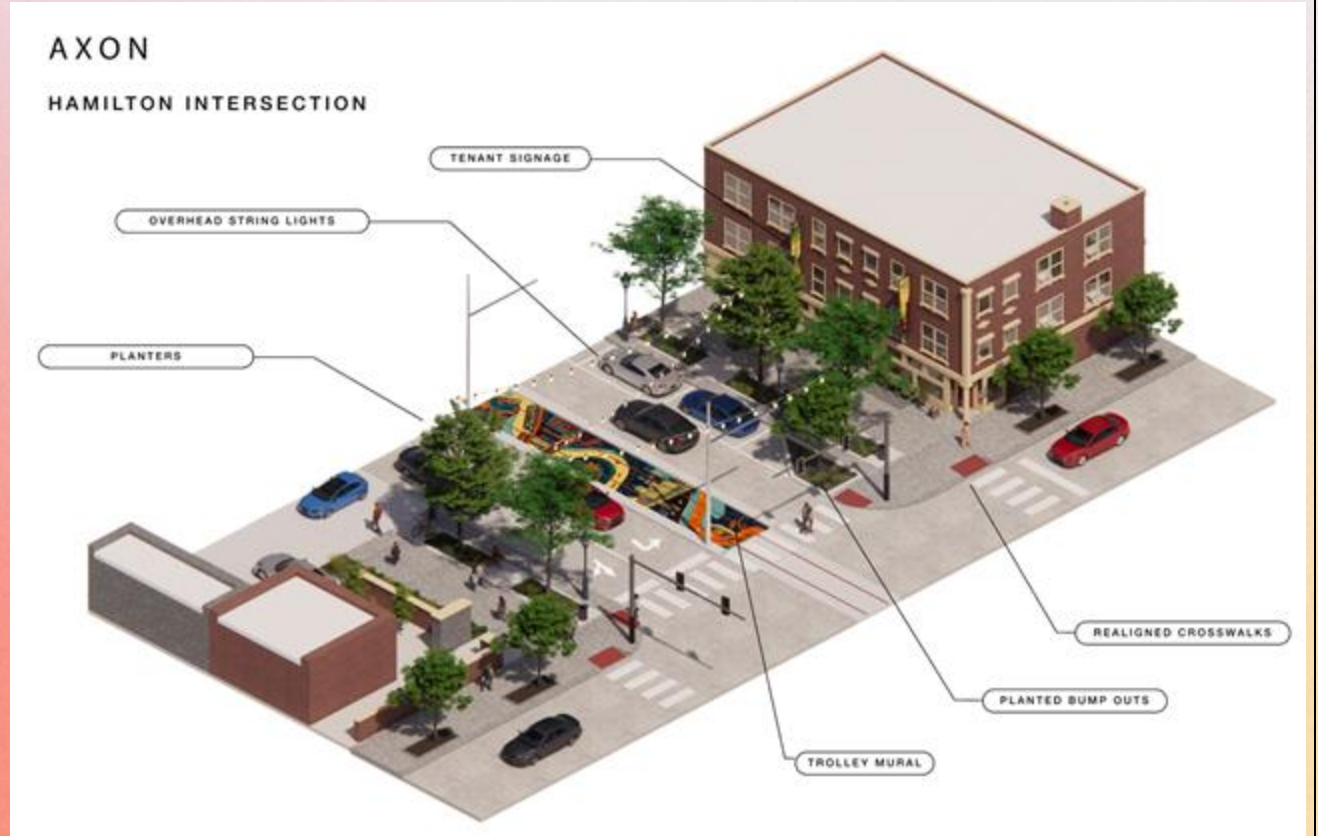
Section D-D

- Introduces 6' seated planters and 9' parallel parking bays.
- Increases shade and pedestrian amenities within a wider shared-use path.
- Adds string lights and a trolley mural for nighttime vibrancy and placemaking.
- Uses traffic calming to slow vehicles and improve safety along Delmar.



Hamilton Intersection

- Visualizes intersection upgrades in 3D.
- Features overhead string lights for evening activation.
- Shows placement of planters, murals, signage, and realigned crosswalks.
- Creates a distinctive, branded gateway experience and sense of arrival at Hamilton.



Goodfellow to Laurel Ave – West Site Plan



1 10'-12' Shared Use Path

4 Improved Crosswalks

7 Improved Bus Stop

2 Curbed Planter

5 Pedestrian Lighting

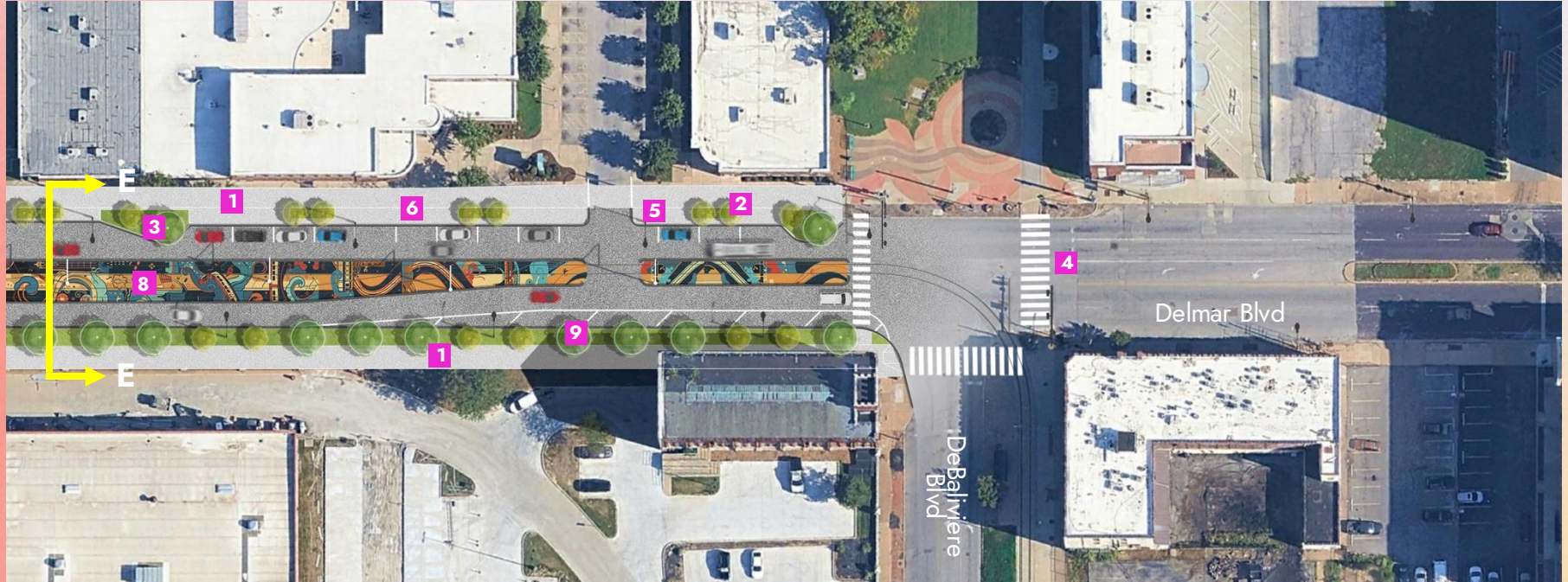
8 Trolley Mural

3 Parking Bump-Out

6 Carriage Walk

9 Tree Lawn Area

DeBaliviere to Goodfellow – Site Plan



1 10'-12' Shared Use Path

2 Curbed Planter

3 Parking Bump-Out

4 Improved Crosswalks

5 Pedestrian Lighting

6 Carriage Walk

7 Improved Bus Stop

8 Trolley Mural

9 Tree Lawn Area

Section E-E

- Introduces 6' seated planters and 9' parallel parking bays.
- Increases shade and pedestrian amenities within a wider shared-use path
- Adds string lights and a trolley mural for nighttime vibrancy and placemaking.
- Uses traffic calming to slow vehicles and improve safety along Delmar.





Next Steps 2026



January - March 2026

Scope, Planning &
Early Design

- Define Project Direction
- Technical Work
- Temporary Transformation Analysis
- Funding Sources
- Community Engagement



April – June 2026

Design Finalization &
Contractor Procurement

- Temporary Transformation Implementation Plan
- Procurement
- Expanded Project Preparation
- Funding Sources



July – September 2026

Implementation & Grant
Work

- Temporary Transformation Deployment
- Community Engagement
- Grant Preparation



October – December 2026

Final Design Alignment
& Grant Submission
Prep

- Grant Application Finalization
- Project Wrap-Up & Next Steps



Samantha Smugala
Executive Director

East Loop Community Improvement District
6150-A Delmar Blvd
St. Louis, MO 63112

Office: 314.379.3370
Cell: 618.334.4772

director@thedelmarloop.com

www.visittheloop.com
www.eastloopcid.org